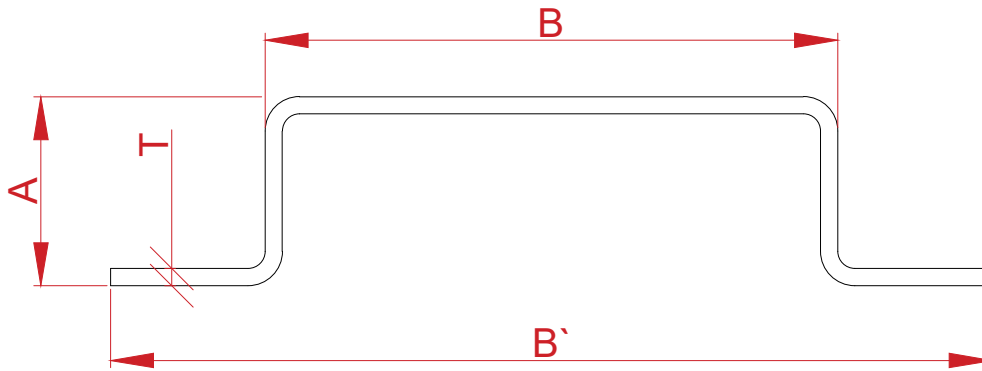
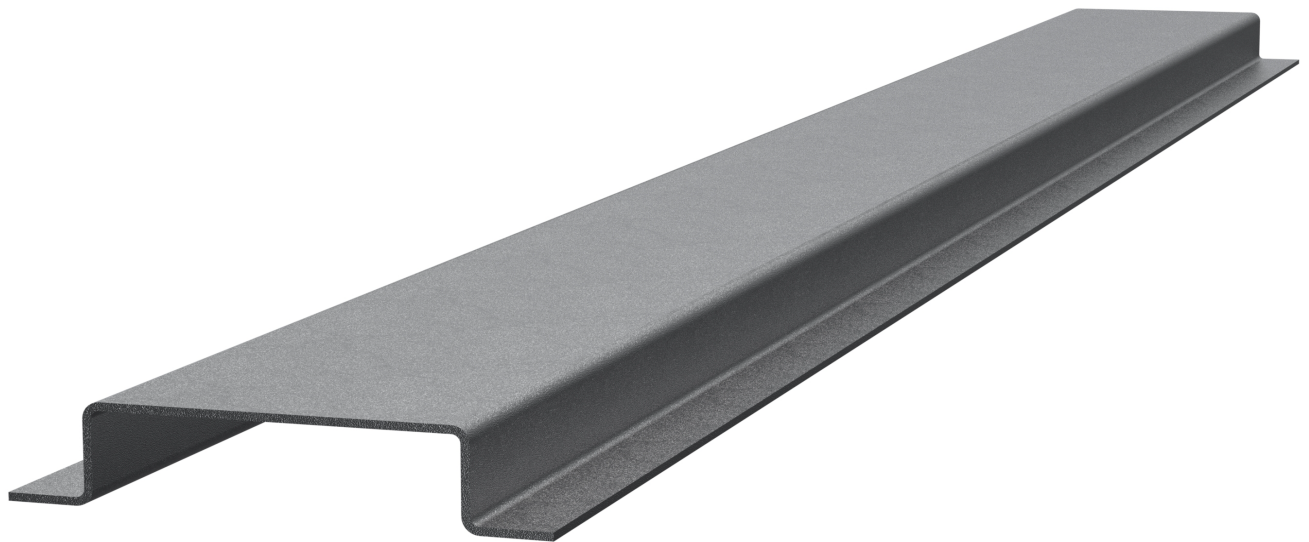


Aluclad Top Hats Section



Aluclad Top Hats 3D View



Option Available:

1. For Single Brackets: Top hat/ 30-33-100-33-30 x 3m, 3mm Aluminium 5251 or Galvanized Steel
2. For Double Brackets: Top hat/ 30-33-185-33-30 x 3m, 3mm Aluminium 5251 or Galvanized Steel



Aluclad Systems Ltd.

Office 32, 203-205 The Vale,
London, W3 7QS, United Kingdom,
info@alucladsystems.com; www.alucladsystems.com

Title: Aluclad Top Hats Details		
Drg. No: ACL-THS-001	Drawn By: PF	Date: 29.02.20
Scale 1:4 @A4	Checked by: Aluclad Systems	Rev: A